

Range Ponds Reporter

Summer 2015

RPEA Annual Meeting
ALWAYS the LAST SUNDAY in JULY!

BUT NOT THIS YEAR!!!!!!

It's on Sunday, July 19, 2015

NEW THIS YEAR!!!
BBQ at Range Ponds State Park on Lower Range
11AM to 2P

We will also be having a business meeting
as there are some positions that are up for a vote.

RPEA will be supplying burgers / hotdogs / non-meat alternative
condiments / chips / soda / ice tea / water

Please bring a salad or dessert to share.

We are asking that you pay the fee to enter the park
to keep the association's costs low.

Age Under 5 - Free
Ages 5-11 \$1.00
Ages 12-64 \$4.50
Age over 65 - Free

The park is open from 9A to 8P
You can come early and stay all day.

If it rains - it will be downstairs at the Ricker Library.
Same day - same time.

For 2015, the RPEA board voted to have the water assessed twice a year which will increase our costs.

From Scott Williams: The benefits to doing the monitoring twice annually comes down to having more data to work with, and with which to compare to the historical data for the lakes, much of which is based on the 2x/year schedule. We are able to assess the annual information with a higher degree of confidence if there is more than just a single visit to base the assessment on. Given some of the unusual conditions that we have encountered in many lakes throughout the state in recent years - possibly due to changes in climate, or extreme weather events, or perhaps related to increasing development pressure in lake watersheds, more data are always better, when the resources are available.

RPEA President's Message

Dear Range Pond Members, Watershed Residents & Property Owners and Lake Enjoyers,

This year we are having a BBQ at the Range Ponds State Park to bring in more people to check out our association and hopefully increase our membership. Our date for the meeting did change this year.

We are an all-volunteer organization and everyone does what they can.

The more people to help, come up with ideas and solutions, the better it is for the lakes. Ideas are wonderful but it does take people to carry them out.

I hope you can join us and meet us at the BBQ!

Your annual dues are what make the professional baseline water testing possible. And this year we are having our water tested twice a year and we need that to continue on. Water reports are on our website RangePonds.org.

Happy Summer everyone,

Ann Gagne, President

INFO@RangePonds.org
OurRangePonds@gmail.com

See you at the meeting on the LAST SUNDAY in JULY (except this year)!

LIKE us on Facebook!

There is a facebook link on the website or search on facebook for Range Ponds Environmental Association.

RPEA positions up for election this year. Treasurer and Three Board Positions

Reprinted with permission from Tom Gordon and the Maine Lakes Society. **MaineLakesSociety.org**

The Myth of Environmental Protection by Tom Gordon, (January 2015)

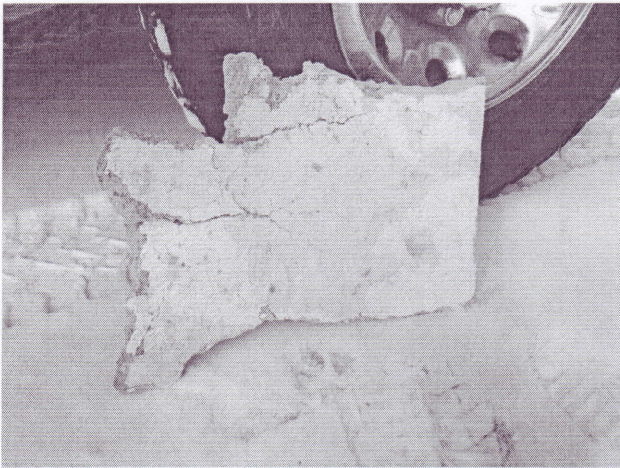
In 1970, there was no DEP, no shoreland zoning, and the Great Ponds Act was generally ignored as people dumped sand in their lakes to create beaches that could not last. Municipal sewage and industrial wastes were pouring into our rivers, streams and lakes.

Times have changed! For 45 years, as COLA and now the Maine Lakes Society, we have advocated for strong but sensible regulation to protect the water quality and beauty of our lakes. Lakeshore property owners have accepted more stringent land use regulations because we know our lakes are fragile and our land use activities can impact the future of the waters we love. We accept regulation "for the sake of our lakes."

While most lakeshore property owners recognize the value of shoreland protection, some do not. For those few, we need firm and effective enforcement of environmental regulations by municipalities and the State. Senator George Mitchell once said: "an unenforced environmental law is worse than no law at all, because it creates the myth of environmental protection where none in fact exists."

We cannot afford to maintain a "myth of environmental protection" when it comes to Maine's lakes! Hundreds of citizens attended public hearing on the Lakes Bill, one of the longest hearings on environmental legislation in recent memory. The message was clear: we love our lakes and we mean business! In the current legislative session, the Maine Lakes Society will support limits on shoreland fertilizer use and new requirements for stormwater infiltration. We will ask for an evaluation of shoreland zoning compliance. And we will continue to monitor any and all legislative proposals that might help or hurt our lakes.

The price of pristine lakes is eternal vigilance – on the water, along the shoreline, throughout the watershed, and in the halls of the State House. Keep your eyes open and make your voice heard in the support of Maine lakes!



The above pictures were taken on or about March 16, 2015.
 This trash was left out on Upper Range Pond after a truck became stuck and was unable to get off the ice.
 These pieces must have been used to provide traction for the vehicle to get off the ice and slush.
 The bags are full of what is shown in the back of this truck which was not the vehicle that was stuck.

Even though the Department of Inland Fisheries was called the following day, there was nothing they could do because no one could provide a license plate number.

This should never happen to our lakes.
 When you see something that doesn't look right on the lakes, contact the Department of Inland Fisheries and Wildlife (Game Wardens).
 To reach a Game Warden at any time, contact the dispatch at the regional communication center nearest you at one of the numbers below.

Southwestern Division - Gray
 RR1, 358 Shaker Road
 Gray, ME 04039
 (207) 657-2345

Regional Communication Center (Gray)
1-800-228-0857

Why Be LakeSmart?

Many of us grew up with suburban landscaping and are accustomed to its tidy lawns and open space. But suburban lawns, with big driveways and wide paths, are deadly for our lakes. LakeSmart landscaping provides a healthy alternative that mimics nature's rich mosaic of plants, shrubs, winding paths, and shady trees – so it looks great, enhances privacy, and works hard to protect property values, wildlife habitat, water quality, recreational opportunities and the vitality of local economies.

It's hard to believe one person's expansive lawn or eroding camp road could be a threat to something as large and enduring as a lake. But when added to a shoreline full of similar sites, it can. All stormwater that gets into a lake carries nutrients. Over time, the cumulative impact can be thousands of pounds of pollutants. The result, "death by a thousand cuts," means algae blooms, fish kills, and the loss of water clarity and spawning habitat. One tiny rivulet from one rainstorm may not seem like much, but when multiplied across a lake watershed and added up over decades, eroded soil can turn a lake into a smelly, pea green mess.

LakeSmart, the flagship program of the Maine Lakes Society, is one of the most effective lake protection programs available today. It recognizes waterfront homeowners who use natural landscaping strategies to protect the health of their lake.

LakeSmart's now-familiar blue and white Award signs get posted at shorefront and roadside. They say, "A friend of the lake lives here."

So, what we do, DOES count.
 And being LakeSmart is the place to start!

To learn more about LakeSmart, scroll through the LakeSmart dropdown menu at **MaineLakesSociety.org** and click for more information on the program.

2014/2015 Friends of the Lakes - Contributors

(contributions are through May 31, 2015)

Thank you for all your generous contributions to keep the RPEA working.
We cannot do this without your support!

Lake Protectors \$125+

Bastow, Richard & Nancy
Closson, Marilyn
Demers, Pat & Andy
Etheridge, Connie
Gambardella, Paul & Susan
Raymond, Janet M.

Lake Patron \$75 - \$124

Burdick, Jon & Celeste
Geiger, KC
Hart, Greg & Deb
Hutchen, Alex & Liz
Kutzen, Barry & Roslyn
McMahon, Michael & Kimberly
Metayer, Roland
Ouellette, Daniel & Debra
Radziszewski, Joe & Jeanne
Richard, Steve & Lynne

The RPEA thanks Cyndi Robbins
for the use of the café at the Lodge
for our board meetings
and for Cyndi's Dockside for our
normal annual meeting!

Additional Donations

Anonymous
Etheridge, Connie
Ford, Ronald & Donna
Geiger, KC
Richard, Steve & Lynne

Lake Associates \$50 - \$74

Almy, Bill & Jeanette
Anderson, Eric
Bazinet, Gary & Karen
Chute, Robert
Crouch, John & Poppy Conner-Crouch
Fifield, Richard & Jeanne
Gagne, Ann
Herland, Bill & Cheryl
Higginbotham, Thomas
Johnson, Lynne
Lamb, Susan & Paul
Limoges, Robert & Gloria
Mildram, Douglas & Maureen
Morgan, Barry & Mary
Pellerin, Linda & Donna Bouchard
Resteghini, Bruno & Joanne

Lake Members \$35 - \$49

Beausang, Ned & Pat
Brettler, Matt & Lynn
Cary, Garry
Clegg, Frederick & Moira
Corb, Clifford & Amy
Driscoll, Patti
Fifield, Craig & Christine
Ford, Ronald & Donna
Haslip, Richard
Levesque, Walter A.
Morra, James
Penthany, Dr. Jane E.
Pillsbury, Mary
Testagrose, Carole
Tinsley, Paul & Cindy
Zukowski, MaryAnn & Bob

RPEA Annual Meeting
Always the LAST SUNDAY in JULY – but not this year!
Sunday, July 19, 2014

At our 2012 annual meeting, we voted to ALWAYS hold our annual meeting on
The LAST SUNDAY in JULY! (except this year)
 You can now plan ahead without having to wait for a newsletter to let you know the date.

Treasurer's Report			
2014-2015 - Cash Basis Accounting			
As submitted by Sandy Moreau, Treasurer			
Beginning Balance	6/1/2014		8,162.06
Cash In			
	Membership Dues	2,935.00	
	Town of Poland - donation	1,000.00	
	T-shirt sales at annual meeting	40.00	
	Donations	305.00	
	Bank Interest	9.22	
	Total Cash In		4,289.22
Cash Out			
	Lake & Watershed Resource Management Association (water quality testing)		
	2014 Bill	-	
	Web Hosting - Maine Hosting Solutions	119.70	
	Annual Meeting exp for speaker - Maine Audubon	50.00	
	Newsletter expenses - printing & postage	911.76	
	Trafton & Matzen (legal) - ME Annual Fees	151.11	
	PO Box Rental	58.00	
	Total Cash Out		1,290.57
Ending Balance	5/31/2015		11,160.71

-----CUT HERE-----CUT HERE-----CUT HERE-----

We are continuing NOT sending a contribution/dues envelope. We know this is not ideal for some people. But it does help us keep admin costs down and it didn't affect the contribution rate. We prefer to use the funds for lake expenses; we hope you choose to contribute using this form.

Name:

Mailing Address:

Summer Address:

Email:

Your annual dues support the continuation of RPEA's efforts to protect the water quality of our Range Ponds. Please make your check payable to RPEA. Thank you.

Lake Member \$35.00

Lake Associate \$50

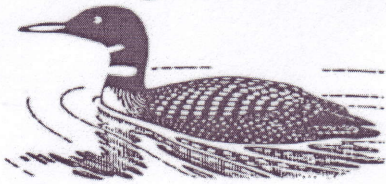
Lake Patron \$75

Lake Protector \$125

Please join or renew your membership today!
Be a Friend! Tell a friend!

We are a 501(c)3 Non-Profit Organization!
RPEA, PO Box 451, Poland Spring, ME 04274

Range Ponds



Environmental Association

RangePonds.org

RPEA Mission Statement

The Range Ponds Environmental Association is dedicated to protecting the water quality of Lower, Middle and Upper Range Ponds by consistent water quality monitoring and by providing education and technical assistance to residents and municipal officials.

RPEA Board Member List with Lake and Term End Date

President
Vice President
Treasurer
Secretary

Ann Gagne – Upper (2016)
Robert Limoges- Upper (2016)
Sandy Moreau - Middle (2015)
Jeanne Fifield - Upper (2016)

Directors

Jeannette Almy - Upper (2015)
Mike Bailey – Middle (2015)
Matt Brettler - Upper – (2017)
Jeanne Radziszewski - Middle (2015)

email – INFO@RangePonds.org

email – OurRangePonds@gmail.com

facebook - [Range Ponds Environmental Association](#)

The Shoreland Zone is the land area within 250 feet from the normal high water mark. Contact code enforcement prior to any tree, earth or construction work done in the Shoreland Zone. These codes were enacted to protect the waterways of Maine. Your CEO is there to assist you and to help protect the lakes.

RPEA
P.O. Box 451
Poland Spring, ME 04274